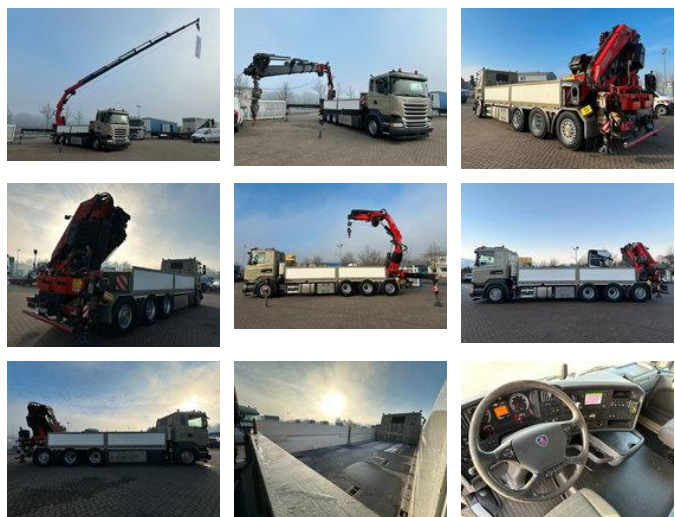


## Scania R450 L 8x4 Fassi F 660 RA 2.28 HE/ Winde/ Funk

### General characteristics

Brand	Scania
Model	R450
Subcategory	Crane truck
Meter reading	279.759km
Year of construction	2016
Date of first registration	01-10-2016
Colour	Gray
Condition	Used
Fuel	Diesel
Emission class	Euro 6
Reference	2010953



### Properties

Single weight	25.200kg
Load capacity	6.800kg
GVW	32.000kg
Cabin	cabin.
Cylinder capacity	12.740cc

# Scania R450 L 8x4 Fassi F 660 RA 2.28 HE/ Winde/ Funk

## Technical specifications

Number of axes	4
Axis configuration	8x4
Transmission	Automatic
Assets	331kw

## Description

Environmental badge: green Damages: none

## Accessories

- Anti-lock braking system
- Air conditioning
- Automatic
- Cruise control
- Air suspension
- Navigation system
- Particulate filter
- Vehicle heater
- Heater